

SECTION 7, T.6N., R1.W., S.L.B. & M.

IN TOWN OF HARRISVILLE & OGDEN CITY

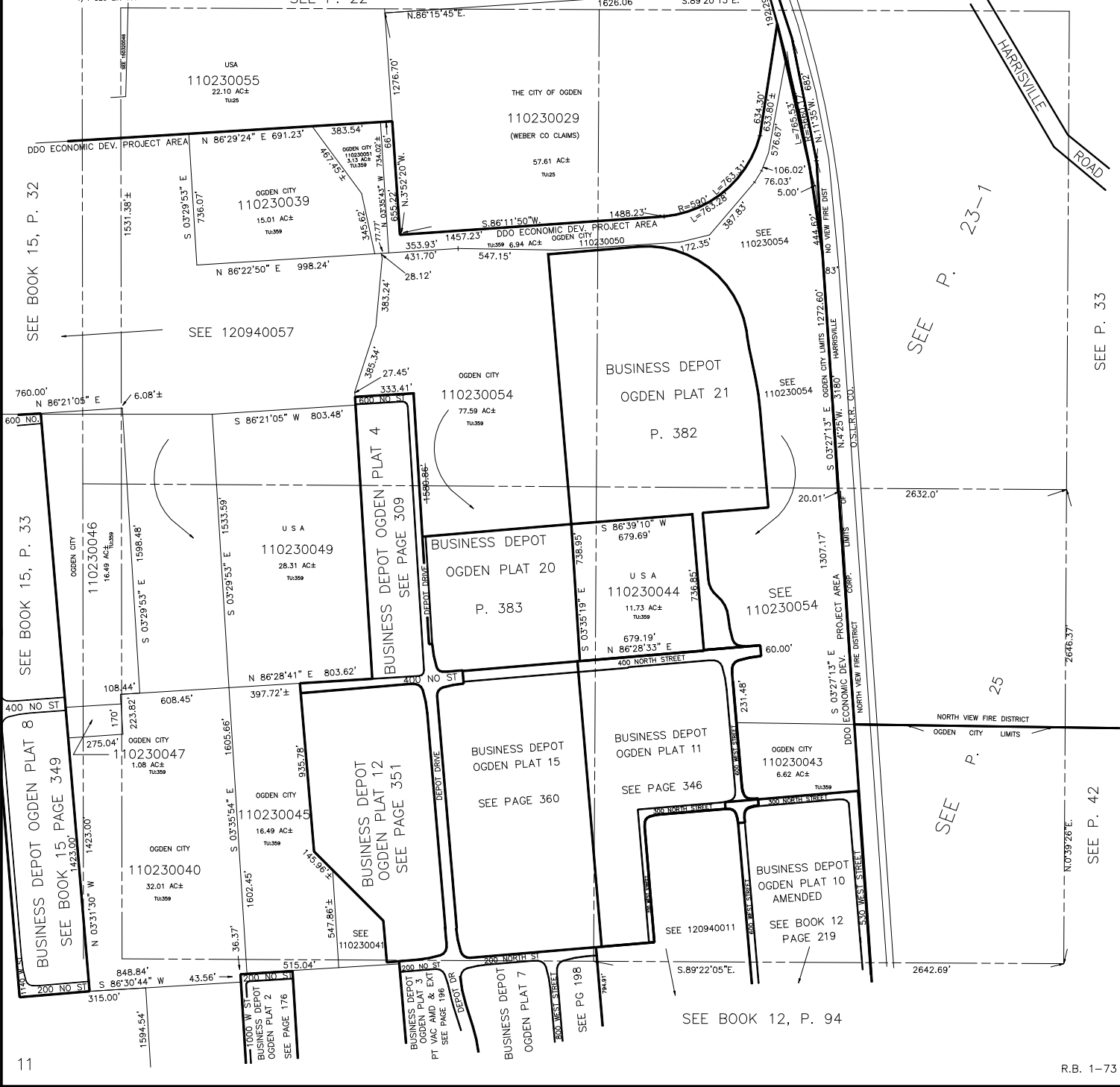
SCALE 1" = 400'

TAXING UNITS: 25, 359

SEE P. 21

SEE P. 22

1/4 SEC LIN ???



SEE BOOK 15, P. 32

SEE BOOK 15, P. 33

BUSINESS DEPOT OGDEN PLAT 8
SEE BOOK 15, PAGE 349

BUSINESS DEPOT OGDEN PLAT 4
SEE PAGE 309

BUSINESS DEPOT
OGDEN PLAT 20
P. 383

BUSINESS DEPOT
OGDEN PLAT 12
SEE PAGE 351

BUSINESS DEPOT
OGDEN PLAT 15
SEE PAGE 360

BUSINESS DEPOT
OGDEN PLAT 11
SEE PAGE 346

BUSINESS DEPOT
OGDEN PLAT 10
AMENDED
SEE BOOK 12
PAGE 219

BUSINESS DEPOT
OGDEN PLAT 2
SEE PAGE 176

BUSINESS DEPOT
OGDEN PLAT 3
PT VAC. AMD. & EXT.
SEE PAGE 196

BUSINESS DEPOT
OGDEN PLAT 7
SEE PG 198

SEE BOOK 12, P. 94

SEE P. 23-1

SEE P. 25

SEE P. 33

SEE P. 42